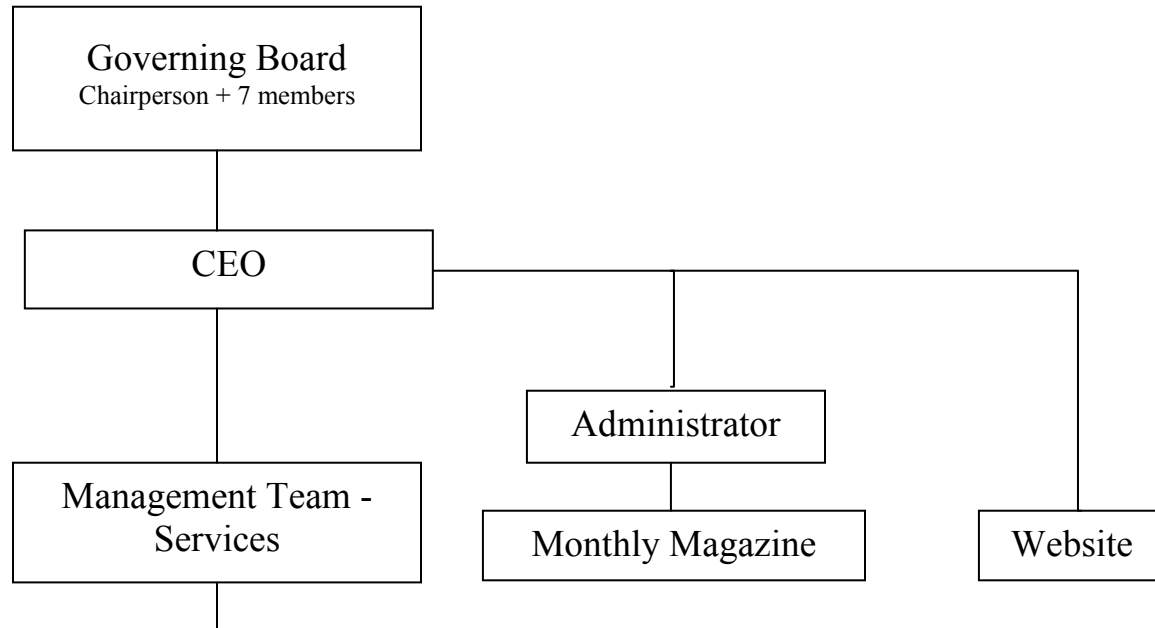


St Jeanne Antide Foundation - SJAF

Organigram
15-Mar-09 Ver4

St. Jeanne Antide Foundation (SJAF)
51, Tarxien Road, Tarxien TXN1090
www.antidemalta.com
Tel: 21808981



Centru Antida <i>Drop-in Centre</i>	Social Work & Counselling Service	VINĊI Community Work Project – Hal Kirkop	Support to Carers Programme	Learning Support Programme (LEAP)	Ahn’Ahwa – Mentoring Youths at risk	Fundraising
Monthly Magazine	Social Work	Community Outreach	Grandparent Education – NannaKola Clubs at parish level	Bridge basic skills training Programme for youths-at-risk (16+)	Social Mentors who additionally offer support in an area of special interest to Mentee (Art, ICT, Crafts)	Range of activities
Reception Volunteers	Counselling	Family Work	Support Group Carers of Persons with a Disability	Homework Support Service (linked to Social Work & Counselling service users)		
Support Groups & Courses	Friendship Group	Youth Work	Individual Counselling to grandparents caring for grandchildren owing to their adult son/daughter’s marriage separation	Range of courses for vulnerable persons		
Library for Service Users	Courses for Service Users	Motivation work for regular employment		Training and jobs for service users through use of ETC schemes		
Crafts for persons with Mental Health Problems	Support to irregular immigrants’ family units Hal Far Oiwias (HFO)	Literacy work				
Meeting place for Malta Autism Parents Association (MAPA)	Hosting students on practicum at post-gradua & undergraduate levels					